

WFO Midland, Texas

MONTHLY REPORT OF HYDROLOGIC CONDITIONS

REPORT FOR:

MONTH

March

YEAR

2022

TO: Hydrometeorological Information Center, W/OH2
 NOAA / National Weather Service
 1325 East West Highway, Room 7230
 Silver Spring, MD 20910-3283

SIGNATURE

J. DeBerry
 In Charge of HSA

DATE

April 15, 2022

When no flooding occurs, include miscellaneous river conditions, such as significant rises, record low stages, ice conditions, snow cover, droughts, and hydrologic products issued (NWS Instruction 10-924)

An X inside this box indicates that no river flooding occurred within this hydrologic service area.

The drought persisted through March, despite a couple of days of isolated thunderstorms that produced localized heavy rainfall. However, no notable hydrologic events occurred.

Precipitation amounts from area ASOS's:

City	ASOS ID	March	February
Carlsbad, NM	KCNM	0.10"	0.01"
Fort Stockton	KFST	T	0.03"
Guadalupe Pass	KGDP	0.01"	T
Midland Int'l	KMAF	0.06"	0.22"
Odessa	KODO	T	0.19"
Terrell County	K6R6	0.00"	0.39"
Wink	KINK	0.03"	T

Precipitation amounts from area AWOS's:

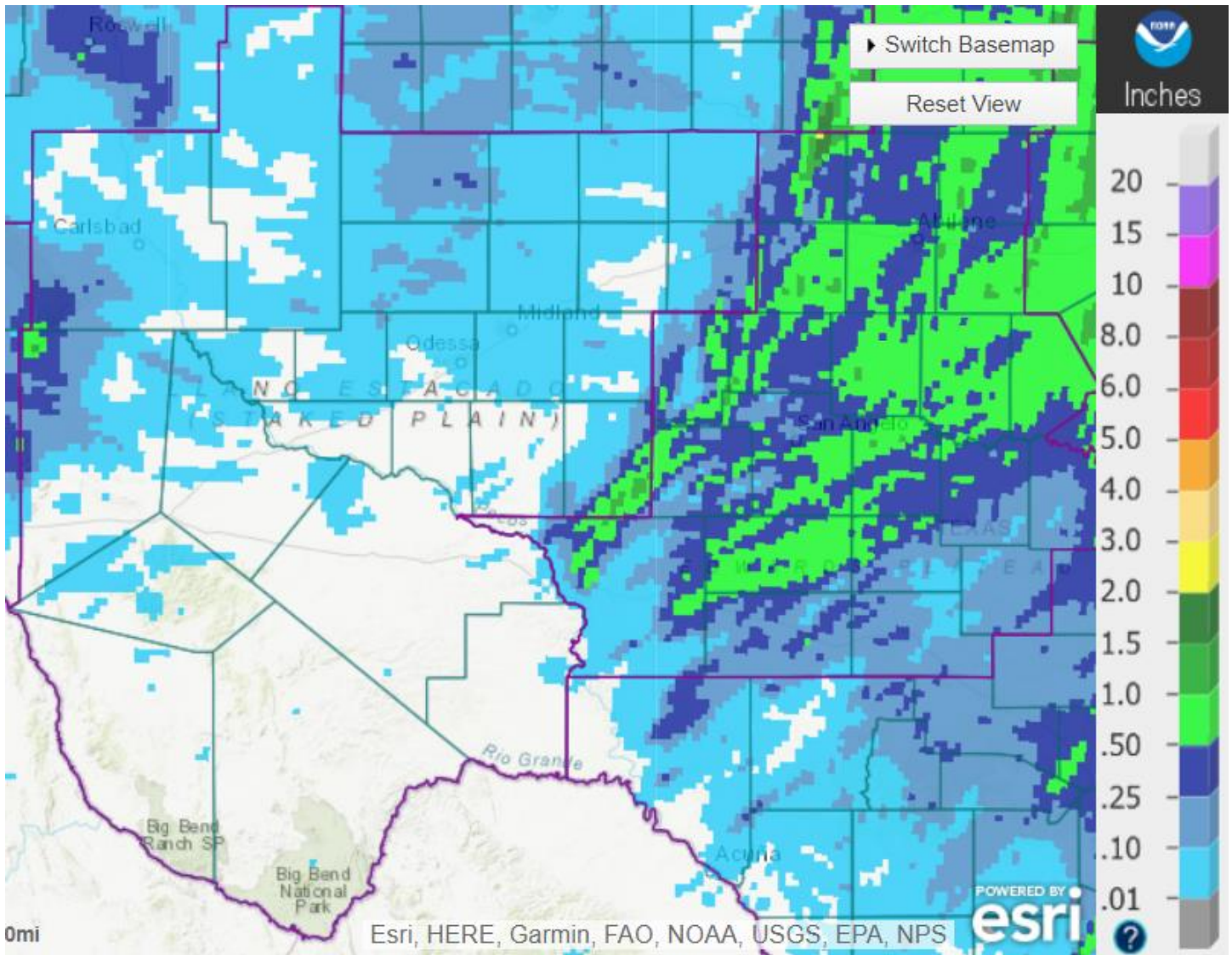
City	AWOS ID	March	February
Alpine	KE38	0.00"	0.02"
Andrews County	KE11	0.07"	0.02"
Artesia, NM	KATS	0.00"	0.02'
Big Spring	KBGP	0.00"	0.41"
Culberson County	KVHN	0.00"	0.08"
Gaines County	KGNC	0.01"	0.00"
Hobbs, NM	KHOB	0.01"	0.00"
Lamesa Municipal	KLUV	0.00"	0.00"
Marfa	KMRF	T	0.04"
Midland Airpark	KMDD	0.00"	0.04"
Pecos County	KPEQ	0.00"	0.08"
Presidio County	KPRS	0.00"	0.00"
Reagan County	KE41	M	M

Snyder	KSNK	0.08"	0.31"
--------	------	-------	-------

Some other locations in the HSA that received notable amounts of precipitation for March were:

Batdraw, Eddy County	0.31"
Queen, Eddy County	0.44"
Dog Canyon, Culberson County	1.13"
Pine Springs, Culberson County	1.18"

84 locations reported rainfall for the month of March, for an HSA average of 0.08".



March Precipitation

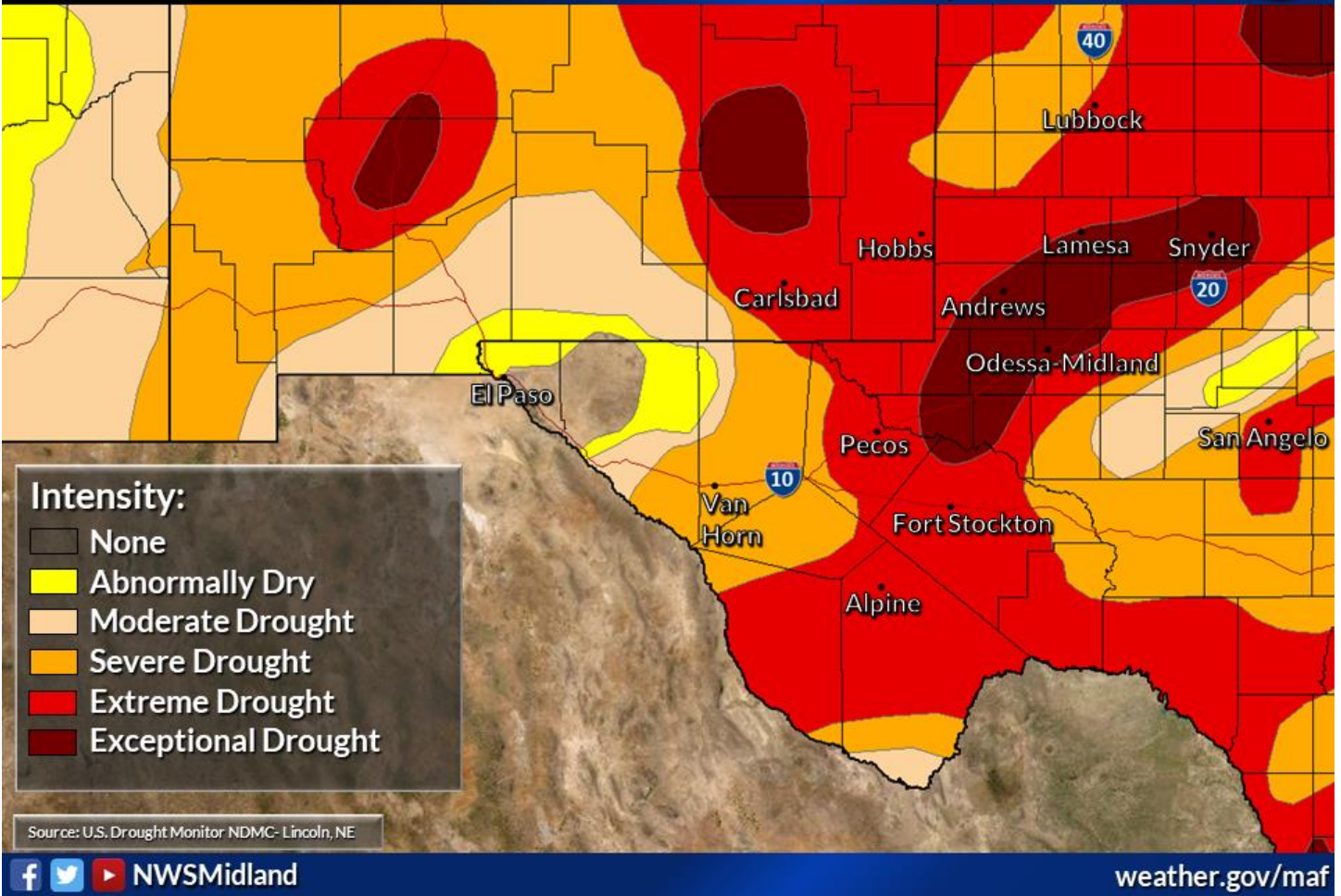
Normal March precipitation for Midland International Air and Space Port is 0.68". Total precipitation for 2022 ending April 1st was 0.32", or 1.63" below normal.

Latest Drought Conditions

Weather Forecast Office
Midland/Odessa, TX
Issued April 1, 2022 5:20 PM CT



Valid 29 March 2022



Reservoir levels across the HSA averaged 59.3% of conservation capacity as of April 1st:

Reservoir (County, State)	April 1 Conserv Cap (%)	March 1 Conserv Cap (%)
JB Thomas (Scurry, TX)	36.7	38.1
Colorado City (Mitchell, TX)	70.7	72.2
Champion Creek (Mitchell, TX)	67.8	68.7
Natural Dam Salt Lake (Howard, TX)	48.4	48.4
Moss Creek (Howard, TX)	74.0	77.0
Brantley (Eddy, NM)	68.0	65.0
Avalon (Eddy, NM)	34.0	65.0
Red Bluff (Reeves, TX)	74.5	75.0

Non-Routine Products Issued for March:

Flash Flood Watches (FFA): 0
Flash Flood Warnings (FFW): 0
Flash Flood Statements (FFS): 0
Flood Advisories/Statements (FLS): 0

Flood Warnings (FLW): 0

Total Non-Routine Products Issued: 0

**cc: email: COE ABQ, HIC, IBWC ELP, IBWC PRD, LCRA, NWS ABQ, NWS EPZ, NWS LBB,
NWS MAF, NWS SJT, SRH, TAMU, TCEQ, USGS CNM, USGS SJT, WGRFC**